

11 Reduction in part weight

Resource consumption cut

Productivity UP

For All Molding Products

Added Value UP



Reduction in material consumption brings lower cost, shorter cycle time and the accuracy in part dimensions, as well.

Micro Cellular Foam Injection Molding Technology (MuCell®)

Overview

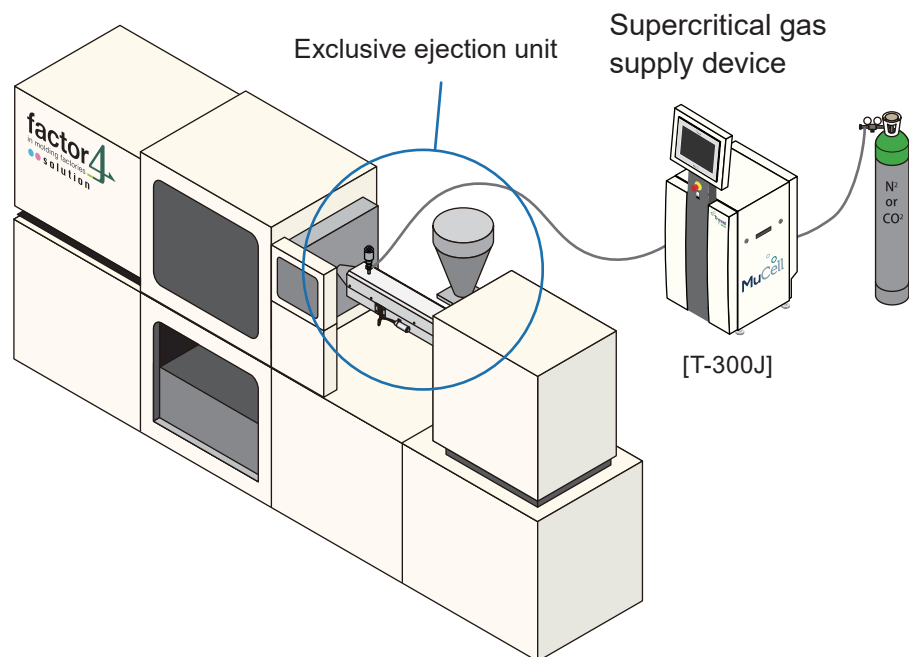
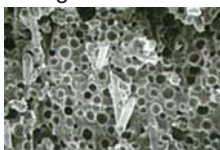
This micro cellular foam injection molding technology is provided by TREXEL Inc. (U.S.A.) Directly injects super critical fluid that is vesicant into the injection unit (Plasticization unit) of the injection-molding machine. The process resin will dissolve fully in the mold by the injection machine and will form the ultra-fine foam condition in the molded products.

• Microcellular

Glass-fiber filled



Non glass-fiber



Features

- The part becomes lighter due to the air type bubbles that form inside the molded part.
- Parts become 25% lighter, surface quality is maintained with no sink marks on rib areas.
- It allowing the weight of the more than 25% with combined with core-back method.

11 Reduction in part weight

Added Value UP

MEMO

If you are looking for a best solution... <https://www.matsuiamerica.com/>



<http://matsui.net/en/>

- Osaka Head Office
Addr:OBP PLAZA BLDG.17th F. 1-4-70,Shiromi,Chuo-ku,
Osaka 540-0001,Japan. TEL:06-6942-9555 / FAX:06-6942-9559
- Tokyo Head Office
Addr:Shinosaki Kangyo BLDG .9F, 1-6-4, Oosaki, Shinagawa-ku,
Tokyo 141-0032, Japan. TEL:03-5436-3521 / FAX:03-3495-5331
- BRANCHES
Matsui America, Inc. TEL: +1 847-290-9680
Matsui (Asia) Co.,Ltd. TEL: +66 02-324-0216
Matsui Mfg (Singapore) Pte. Ltd. TEL: +65 6744-9602
PT. Matsui Solutions Indonesia. TEL: +62 21-8379-3253
Korea Matsui Inc. TEL: +82 032-811-9400
Taiwan Matsui Co., Ltd. TEL: +886 2-8919-1556
Shanghai Matsui Machinery Co., Ltd. TEL: +86 21-5442-3111
Matsui Technologies India Ltd. TEL: +91 120-2397114

- ! Information in this catalog is current as of March 21, 2019.
- The actual color of products may differ slightly from the printing in this catalog.
- Product specifications and designs are subject to changes for improvements without prior notice.
- The scope of warranty provided for Matsui MFG., Co., Ltd. machinery or devices is limited to repair or replacement of parts. Any defects of Matsui's machinery or products manufactured by using such machinery, as well as defects in product manufacturing are excluded from the warranty.



Matsui, your Plastic molding partner for resource reduction, propose to achieve 'factor 4' in molding factors. We aim to increase productivity by 4times by achieving the following, 'Save Water','Save Rasin s' and 'save Energy'.