

3 Reduction in cycle time

Resource
consumption cut

Productivity UP

For Molds with Complex Shapes

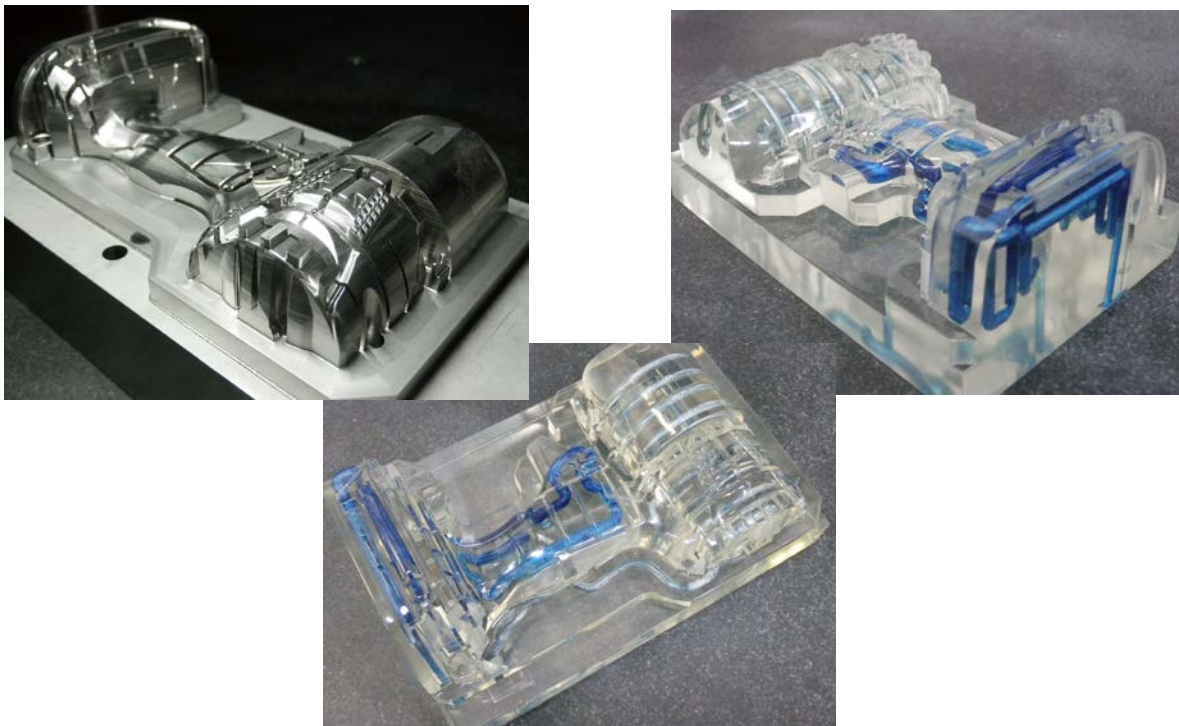
Added Value UP

Do you find your mold and cooling water pipe inserts optimal?
Improve your productivity by introducing the uniform cooling
method with 3D cooling water tube inserts.

Mold inserts with hybrid laser sintering & milling

Overview

A mold insert made with hybrid laser sintering & milling.
Coolant pipes can be arranged in any 3D layout within the mold.
Excels at molding items with shapes like complex cores, deep ribs and
rounded sections.



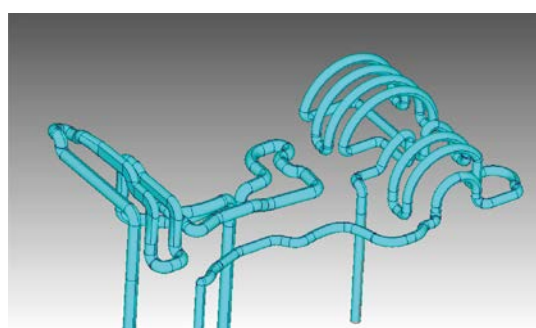
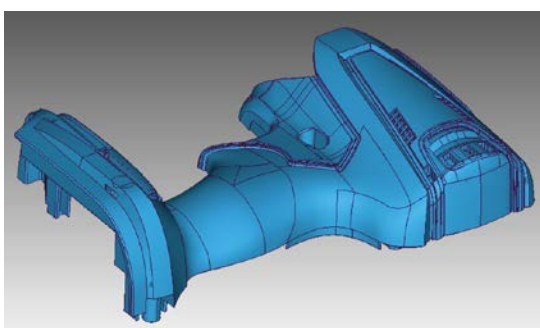
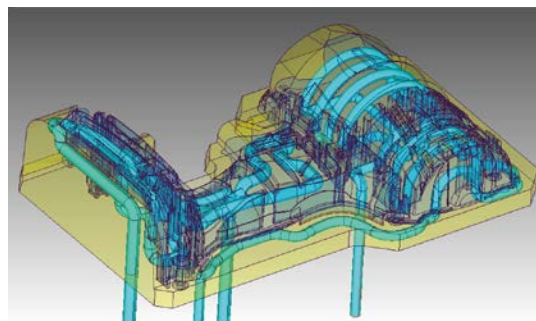
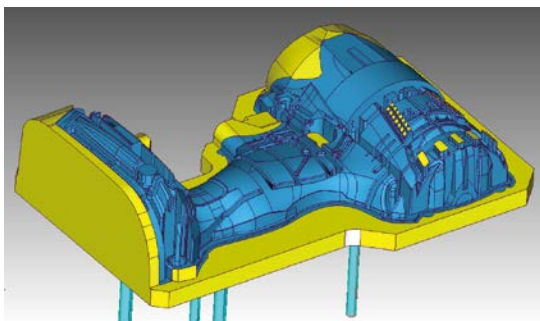
Features

- Faster molding cycles
 - Used for mass-production molds
 - Significantly faster delivery of mold inserts
 - Effect simulation in advance
- Increased cooling effectiveness with coolant pipes molded in any 3D orientation
High hardness materials: Hrc. 51 - 57 (after aging)
One-step machining of complex shapes
Effects can be visualized using flow analysis software

3 Reduction in cycle time

Productivity UP

• 3D water pipe modeling



MEMO



<https://matsui.net>

• Osaka Head Office
Addr: OBP PLAZA BLDG. 17th F. 1-4-70, Shiromi, Chuo-ku,
Osaka 540-0001, Japan. TEL: 06-6942-9555 / FAX: 06-6942-9559

• Tokyo Head Office
Addr: Shinosaki Kangyo BLDG. 9F, 1-6-4, Oosaki, Shinagawa-ku,
Tokyo 141-0032, Japan. TEL: 03-5436-3521 / FAX: 03-3495-5331

• BRANCHES
Matsui America, Inc. TEL: +1 847-290-9680
Matsui (Asia) Co., Ltd. TEL: +66 02-324-0216
Matsui Mfg (Singapore) Pte. Ltd. TEL: +65 6744-9602
PT. Matsui Solutions Indonesia. TEL: +62 21-8379-3253
Korea Matsui Inc. TEL: +82 032-811-9400
Taiwan Matsui Co., Ltd. TEL: +886 2-8919-1556
Shanghai Matsui Machinery Co., Ltd. TEL: +86 21-5442-3111
Matsui Technologies India Ltd. TEL: +91 120-2397114

- ! Information in this catalog is current as of August 2021.
- The actual color of products may differ slightly from the printing in this catalog.
- Product specifications and designs are subject to changes for improvements without prior notice.
- The scope of warranty provided for Matsui MFG., Co., Ltd. machinery or devices is limited to repair or replacement of parts. Any defects of Matsui's machinery or products manufactured by using such machinery, as well as defects in product manufacturing are excluded from the warranty.

factor4
in molding factories

Doubling Wealth,
Halving Resource Use

Matsui, your Plastic molding partner for resource reduction, propose to achieve 'factor 4' in molding factories.

We aim to increase productivity by 4 times by achieving the following, 'Save Water', 'Save Resin' and 'save Energy'.

If you are looking for a best solution...

factor4 solutions

