

9 Resolve problems with water quality

Resource
consumption cut

Productivity UP

For Cooling System Piping

Added Value UP

Is scale buildup reducing your production efficiency?
Ensure reliable molds with preventive maintenance!

Low-pressure Complex Flush Mold Washer

Overview

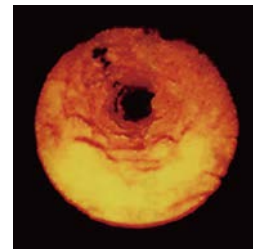
Only uses water and air (environmentally friendly)!
Thoroughly cleans molds and devices using the principles of cavitation and complex flushing.

WaterWay

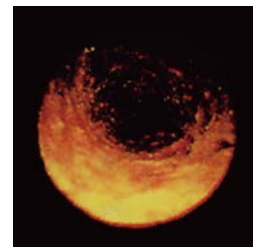


[NR-0050]

Before cleaning
(flow rate 8 L/min)



After cleaning
(flow rate 18 L/min)



Features

- Uses no chemicals.
- Dirt is trapped in the filter, and flushing water is recycled.
- Cleaning can be automated, or integrated with equipment.
- In addition to mold water pipes, the washer can also be used for rollers, cooling circuits of pump jackets, shell-and-tube type heat exchangers or plate type heat exchangers of chillers, and many other applications.
- Preventive maintenance with regular washing is effective.

