

## 10 Improve dimensional precision

Resource  
consumption cut

Productivity UP

For Precise And Complicated Molds

**Added Value UP**

**OPM** lab  
OPM laboratory Co.,Ltd.

Any troubles with the un-uniform deformation after molding?  
Dimensional precision improves by the uniform cooling with  
3D-printed cooling water tube inserts.

### Mold Insert by 3D Metal Print

#### Overview

This is mold insert by Rapid Prototype Mold. The free setting in frame is possible by conformal cooling. Effect are shown on complicated core and deep rib part of round molded parts.



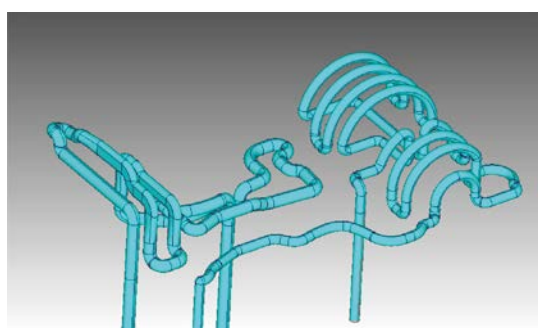
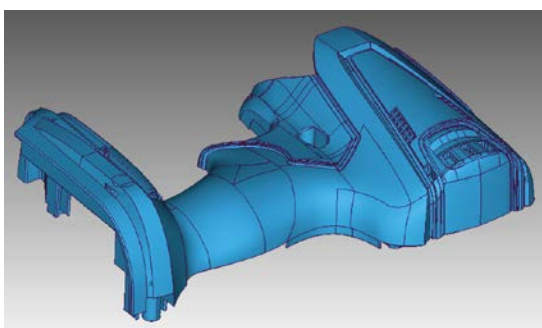
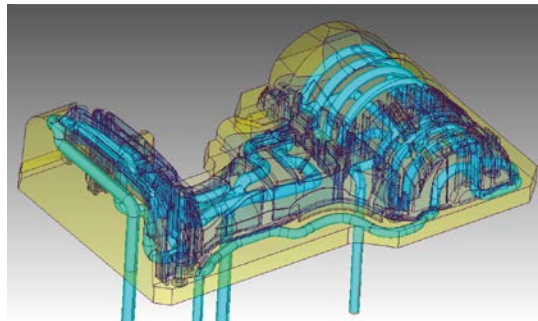
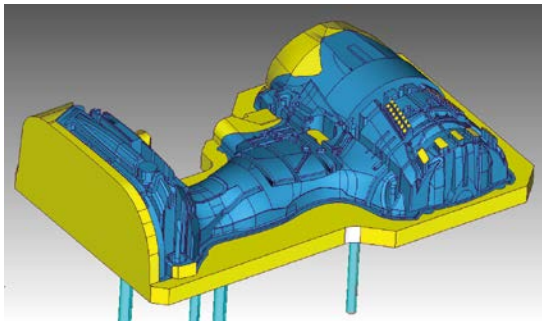
#### Features

- Large reduction of mold insert delivery date : especially for sophisticated parts.
- With mold error integrated : Solid construction without partition is possible.
- High cycle on molding : Cooling effect improves by free tertiary main cooling water pipe.
- Solution for gas problem : Porous part for gas removal. Easily installed.

# 10 Improve dimensional precision

Added Value UP

## • 3D water pipe modeling



## MEMO



<https://matsui.net>

• Osaka Head Office  
Addr: OBP PLAZA BLDG. 17th F. 1-4-70, Shiromi, Chuo-ku,  
Osaka 540-0001, Japan. TEL: 06-6942-9555 / FAX: 06-6942-9559

• Tokyo Head Office  
Addr: Shinosaki Kangyo BLDG. 9F, 1-6-4, Oosaki, Shinagawa-ku,  
Tokyo 141-0032, Japan. TEL: 03-5436-3521 / FAX: 03-3495-5331

• BRANCHES  
Matsui America, Inc. TEL: +1 847-290-9680  
Matsui (Asia) Co., Ltd. TEL: +66 02-324-0216  
Matsui Mfg (Singapore) Pte. Ltd. TEL: +65 6744-9602  
PT. Matsui Solutions Indonesia. TEL: +62 21-8379-3253  
Korea Matsui Inc. TEL: +82 032-811-9400  
Taiwan Matsui Co., Ltd. TEL: +886 2-8919-1556  
Shanghai Matsui Machinery Co., Ltd. TEL: +86 21-5442-3111  
Matsui Technologies India Ltd. TEL: +91 120-2397114

- ! Information in this catalog is current as of August 2021.
- The actual color of products may differ slightly from the printing in this catalog.
- Product specifications and designs are subject to changes for improvements without prior notice.
- The scope of warranty provided for Matsui MFG., Co., Ltd. machinery or devices is limited to repair or replacement of parts. Any defects of Matsui's machinery or products manufactured by using such machinery, as well as defects in product manufacturing are excluded from the warranty.

**factor4**  
in molding factories

Doubling Wealth,  
Halving Resource Use

Matsui, your Plastic molding partner for resource reduction, propose to achieve 'factor 4' in molding factories.

We aim to increase productivity by 4 times by achieving the following, 'Save Water', 'Save Resins' and 'save Energy'.

**If you are looking for a best solution...**

**factor4 solutions**

