

For All Molding Products

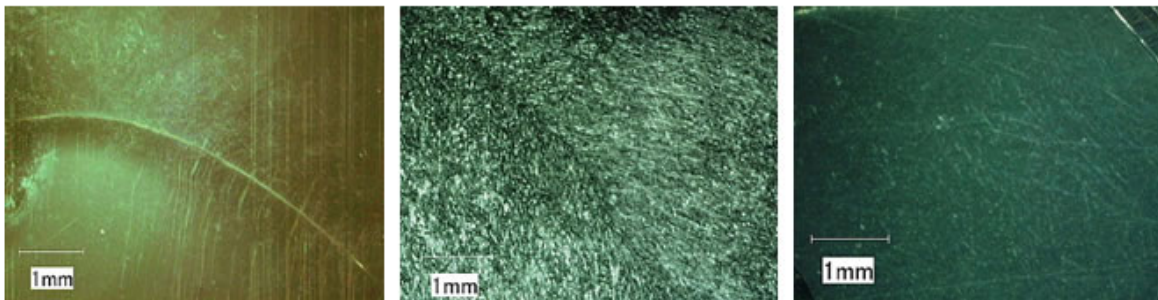
A molding product can be lightened and the surface quality can be improved by the combination of RHCM® and MuCell® !

R&M molding system

Overview Same as MuCell®, in R&M molding, foam cell becomes greater and breaks at the flow end during the process of filling the mold cavity with foaming material. Swirl marks remain on the product surface during filling. However, at the end of filling, the internal pressure is increased so that transferring is conducted, and the swirl marks disappear.

■ Photograph of surfaces around the weld lines.

Photograph shows magnified views of the surfaces around the weld lines. The weld line is almost even but a remarkable trace of broken bubbles remains along the direction of flow on the MuCell® product. The R&M product shows no weld lines or swirl marks.



Conventional
injection molding

MuCell®

R&M

Features

- The surface quality of MuCell® product can be improved by RHCM®.
- It covers over swirl marks typical to MuCell®, while maintaining all the advantages of MuCell® such as dimensional stability, elimination of warpage/sink mark.

*R&M, the combination of RHCM® and MuCell® is a patented intellectual property of OSK (Ono Sangyo Co.,Ltd).

MEMO

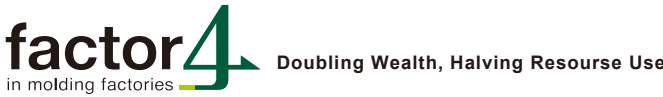
If you are looking for a best solution... http://matsui-mfg.co.jp/factor4_solutions/



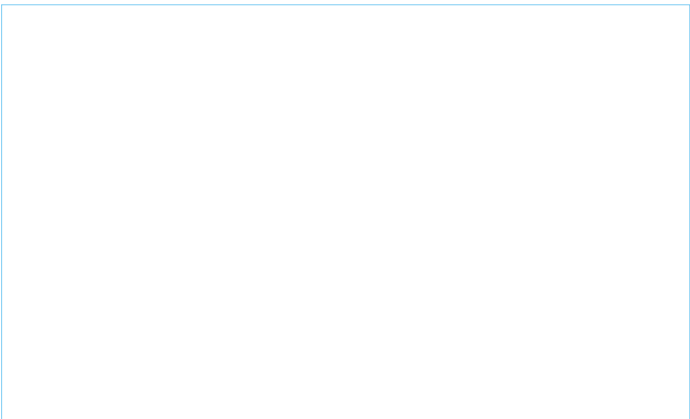
MATSUI MFG. CO., LTD. <http://matsui-mfg.net>

- **Osaka Head Office**
Addr:OBP PLAZA BLDG.17th F. 1-4-70,Shiromi,Chuo-ku,Osaka 540-0001,Japan.
TEL:06-6942-9555 / FAX:06-6942-9559
- **Tokyo Head Office**
Addr:Shin Osaki Kangyo BLDG.9F, 1-6-4, Oosaki, Shinagawa-ku,Tokyo 141-0032, Japan.
TEL:03-5436-3521 / FAX:03-3495-5331
- **BRANCHES**

Matsui America, Inc.	TEL: 847-290-9680	/ FAX: 630-980-2269
Matsui (Asia) Co.,Ltd.	TEL: 02-324-0216	/ FAX: 02-324-0219
Matsui Mfg (Singapore) Pte. Ltd.	TEL: 6744-9602	/ FAX: 6743-6111
Korea Matsui Inc.	TEL: 032-811-9400	/ FAX: 032-811-9406
Taiwan Matsui Co., Ltd.	TEL: 02-8919-1556	/ FAX: 02-8919-1885
Shanghai Matsui Machinery Co., Ltd.	TEL: 021-5442-3111	/ FAX: 021 5442-48
Matsui Technologies India Ltd.	TEL: 0120-2397114	/ FAX: 0120-2397114



Matsui, your Plastic molding partner for resource reduction, propose to achieve 'factor 4' in molding factors.
We aim to increase productivity by 4times by achieving the following, 'Save Water', 'Save Rasin s' and 'save Energy'.



Information in this catalog is effective as of Sep2013.
Actual color of the product may slightly differ from the printing in this catalogue.
Rating and/or design of the product may change for improvement without prior notice.